

THE STARK COUNTY STORY

by Edward Thornton Heald

IN FOUR VOLUMES
with three parts to Volume IV

Volumes in Series

- I. The Cities, Towns and Villages of Stark County, 1805 - 1815.
Scripts 1 - 76, xvi + 688 p., 1949.
- II. The McKinley Era, 1875 - 1901.
Scripts 77 - 152, xvi + 706 p., 1950.
- III. Industry Come of Age, 1901 - 1917.
Scripts 153 - 231, xvi + 822 p., 1952.
- IV. Part 1, Free People At Work, 1917 - 1955.
Scripts 232 - 301, xvi + 856 p., 1955.
- IV. Part 2, The Suburban Era, 1917 - 1958.
Scripts 302 - 370, xvi + 850 p., 1958.
- IV, Part 3, The American Way of Life, 1917 - 1959.
Scripts 371 - 463, xvi + 1084 (est.), 1959

Copyright 1959
The Stark County Historical Society
First Edition

Printed by
THE STONEMAN PRESS
Columbus, Ohio

PART 3

VOLUME IV

THE AMERICAN WAY OF LIFE 1917 - 1959

Being Scripts 371 - 463
As Broadcast over WHBC - WHBC-FM
Rearranged and edited as a County History
with bibliography, references and index

A Contribution to the
STARK COUNTY (OHIO) SESQUICENTENNIAL
1809 - 1959

Edward Thornton Heald
Historian of the Stark County Historical Society

A PUBLICATION OF THE STARK COUNTY HISTORICAL
SOCIETY
Canton, Ohio, 1959

Republican National Committeeman for the State of Ohio. R. R. Krisher, a Massillon boy, graduate of Washington High School in 1919, and of the Business College in 1922, is a director of the First Savings & Loan Company, a director of Evans Enterprises, a director of Midstate Industrial Trucks, and a long time member of the YMCA board.

The *Ohio Paper Products Company* at 346-48-11th Street SE, was organized in 1916 by Maurice Bissell, Frank McLain, Ben Fairless, C. A. Albright and others, to sell screw machine parts to retailers. Following its incorporation that year, Mr. Bissell was elected president and general manager. To package the parts the company made its own tubular containers. These became so popular, and demand for them so great, that they became the principal product, and the manufacture of screw machine parts was discontinued. Many different sizes and kinds of tubular products are produced, and millions are shipped every week. One customer gets 1,000,000 to 1,500,000 pieces a week.⁹ The first location was at 1500 N. Mill Street. The present plant was built in 1928. Present officers are J. T. Whelan, president; J. H. French,¹⁰ vice-president; and Merle L. Culler, secretary and treasurer. Mr. Whelan came in May 1949 from the Cleveland Container Corp., with which company he had been connected since 1945 in a New Jersey plant. He is a past director of the Brookside Country Club and resides in Hills and Dales.

Peoples Cartage, Inc., under the leadership of "Ray" L. Sibila, has in 22 years grown from one truck to a large fleet of all types of semi-trailer vans and dump trucks. Business has grown from scratch to \$1,500,000 gross a year, and Mr. Sibila is proud of the fact that many families derive their livelihood from his business and efforts.

A new modern, fireproof storage-office building has been erected at 2035 S. Erie Street, just south of the City Cemetery, where the public is cordially invited to inspect a truly modern and scientific place to store their valued possessions. The building on the former site at 207 Erie N. was razed, and an annex built for the Post office parcel post service in 1953-1954, the same being leased to the Post office.

This company has become one of Massillon's important businesses, entitled to recognition in the Stark County Story, regardless of age. Though the company has not yet reached its 25th birthday, Mr. Sibila has been in Massillon business for 33¹¹ years, having for 11 years prior to his present connection, handled the road and repair service in Massillon for the Automobile Club in his own name.

Peoples Cartage does a large volume of highway construction work and has contracts for numerous large road construction jobs in central and northeastern Ohio. Mr. Sibila is proud to be recognized as the largest

⁹ The company is getting into the plastic line of tubular products, March 1959.

¹⁰ Mr. French is no longer with the company.

¹¹ 35 years, 1959.

construction dump operator in northern Ohio. A landmark of progress for the company was the purchase in 1947 of the Mayflower Agency buildings and equipment in Massillon. Peoples Cartage also has United States mail contracts, hauling U. S. mail both inter and intra-state. The company has remained primarily a family business. Other officers, besides Mr. Sibila, who serves as president, are his son, "Don" R. Sibila, vice-president; Keith Dutchess, secretary; Jean Hodgson, daughter, assistant secretary, and Ronald R. Sibila, son, treasurer, who took up his duties in July 1957 after graduating from Ohio University at Athens, and serving three years as a navigator in the Army Air Corps.

Two important dairies are *Oberlin Dairy*, established in 1915 and *Acme Dairy Products*, organized in 1923. The Oberlin Dairy, oldest around Massillon, was started by Harold Oberlin on the old family farm four miles west of Massillon off Route 93 near Community Sixteen. Starting by producing his own milk, bottling it himself, and driving his only route, delivering 100 quarts a day, Mr. Oberlin has expanded his trade to eight routes,¹² covering territory between Dalton, Canal Fulton, Massillon and Reedurban. In 1923 he took in Frank Brinker, a brother-in-law. In 1927 Brinker took the farm and sold his dairy interest to Henry Morris. The dairy was moved to 308-20th Street NW. In 1932 Oberlin bought out Morris, and has been sole proprietor since. A retail dairy store was opened at 1917 Lincoln Way W in March 1956. Mr. and Mrs. Oberlin were married in 1933. They have three children. The older boy, Harold Robert Oberlin, a 1957 graduate of Ohio State University with degree in Dairy Technology, has a commission in the Army as 2nd Lieutenant;¹³ the younger boy, Charles W. Oberlin, is a senior in Washington High School.¹⁴ A daughter, Barbara, is in Lorain Andrews School.

Acme Dairy Products Company with a new processing plant at 894-11th Street NE, was started by Henry and I. H. Vogelgesang in 1923 at East Greenville as a milk distributing dairy. In 1924 a processing plant was built at 894-11th Street NE and the name Acme Dairy Products Company adopted. In 1927 the company was incorporated with a capital of \$50,000. The first officers were I. H. Vogelgesang, president and secretary; H. L. Vogelgesang, treasurer, and F. G. Hiester, manager. Present officers are I. H. Vogelgesang, president and general manager; C. W. Vogelgesang, secretary; H. E. Vogelgesang, vice-president and treasurer, and A. W. Young, assistant secretary. The processing plant handles more than 1,000,000 pounds of milk a month in producing 18 different products, including ice cream, cottage cheese, condensed milk and butter. The salesroom, office and garage at 1207 Lincoln Way E, was built in 1937 but

¹² The Brookfield Dairy has been purchased adding 2 routes making a total of 10.

¹³ Now in Reserves, 1959.

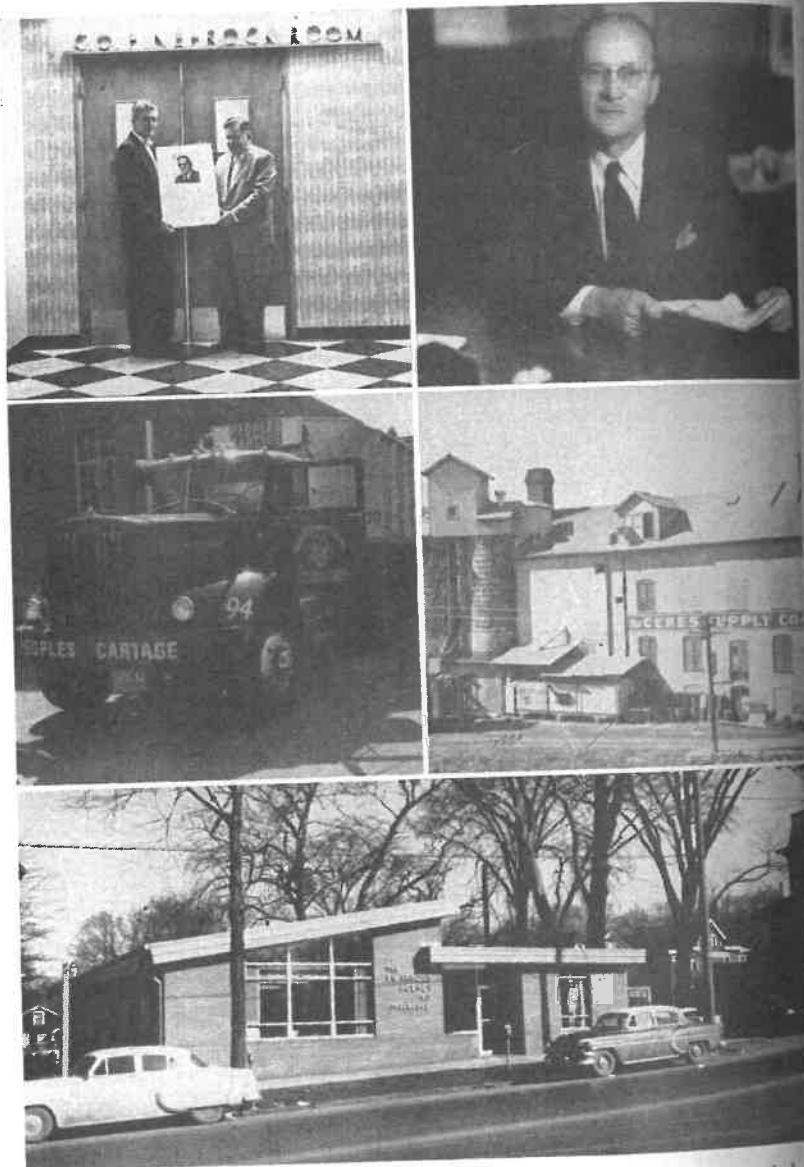
¹⁴ Now a Freshman at O.S.U. studying architecture.

the store was dis Dairy Products C A new ice cream Street NE. There includes Stark, S

Fifty years of started in 1908 t Bank. Such busin 1914 M. P. L. Harry L. McLain with offices in the Puerto Rico in 1 American Colonia look after his P retained their par hofer purchased 1 Mr. Kirchhofer t over the business insurance business hofer retained the pany in Massillon He was mayor of from president of from office by Go quit politics. He charter member o offices in the Mc

John McLain built the *Lincoln* years, later selling building, which r He turned the ope took over shortly the Lincoln Theat Ben Schwarz have of Stark County.

Padula's wid at 1328 First Stre prietor, Joe Padu Cherry NW. Star up the restaurant to be torn down present attractive and high quality



26. Upper left, Elton A. Mollett (left) and I. M. Emery (right) who headed the YMCA campaign in 1954-56, holding picture of C. O. Finebrock at opening of his room at YMCA. Mr. Emery is now YMCA president. Courtesy of the YMCA. Upper right, M. P. L. Kirchhofer, Courtesy Mr. Kirchhofer. Middle left, Partial view late model 20-ton truck Peoples Cartage, Inc., Courtesy Mr. Ray L. Sibila. Middle right, Ceres Supply Co., Inc. Courtesy R. M. Hess. Bottom, New home, The F W. Arnold Agency, Courtesy the company.

391, 392. I

years durin
in charge o
of the new
232 Feder
John
and engag
Massillon.
Frieg Rest
Lincoln W
family ma
him. Henr
World W
Germany.
his foot br
duties and
troues an
E. B.
W. Va. in
1904 and
Main Stre
to his pre
Stark Cou
Near
year old
his uphol
in New Y
N. Y. His
Pa. He d
In 1925
years. In
first locat
and three
frequentl
keeps an
of his hi
City that
scale was

Mr.
markman
sold 200
collector
5 Pri
mg. P. A.
6 W
7 79